

## Installing Fermilab's PowerPoint Template File (PC)

1

### PowerPoint Template File

A Fermilab PowerPoint template has been created based on Fermilab's brand and identity. This template file is available to install and save on your computer for use on all future Fermilab presentations. This file offers a clean layout, clear typography and appropriate color choices.

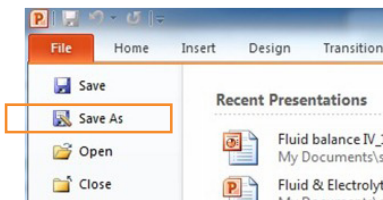
The template file is available only in the standard 4:3 format.

### Powerpoint Guidelines

This guideline provides information on installing the template file, opening the file to begin creating your PowerPoint, selecting slide layouts, and a brief style guide on the header and footer, colors, and fonts. The examples in this guide are screenshots from PowerPoint 2010 (and few from 2007) on a Windows XP or Windows 7 operating system. Keep in mind that PowerPoint will have a different interface and layout depending on your operating system and software version of Microsoft Office.

### Installing Fermilab PowerPoint template on your computer

1. Click the **File** (PPT 2010) or **Office Button** (PPT 2007) and click **Save As**.



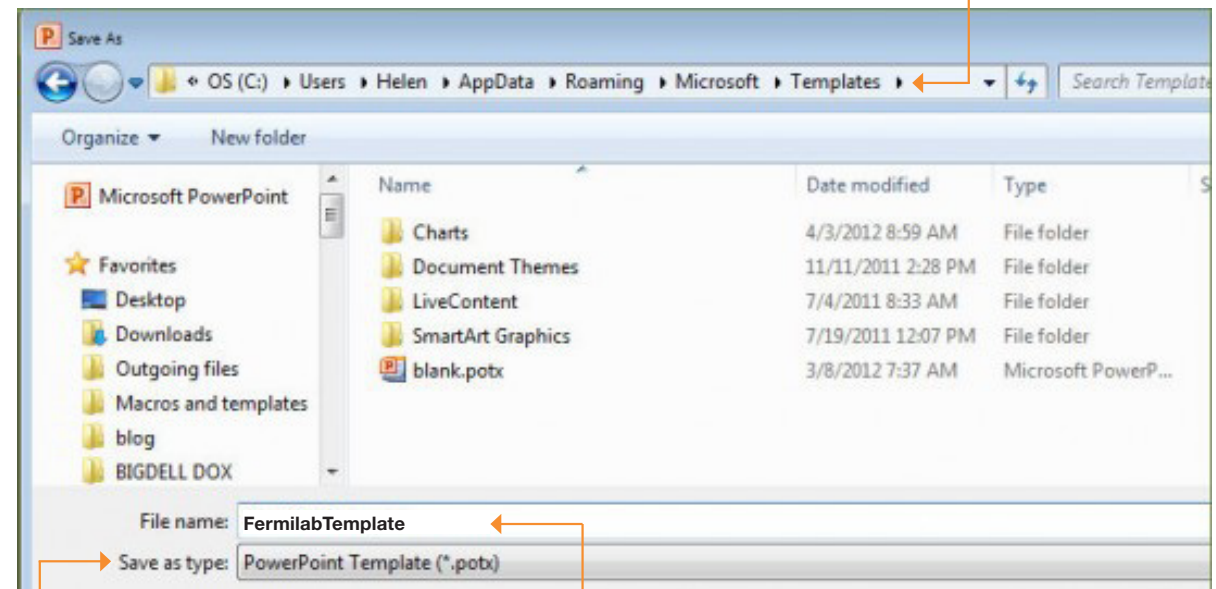
2. In the **Save as type** list box, choose **PowerPoint Template** (.pot) or (.potx)
  - PowerPoint automatically chooses the correct folder when you choose to save as a Template(.pot). Accept the folder it suggests. Write down the full path to the folder; you may need it later.
  - These are the correct folders and file path:
    - Windows 7 or Windows Vista**  
C:\Users\UserName\AppData\Roaming\Microsoft\Templates
    - Windows XP**  
C:\Documents and Settings\UserName\Application Data\Microsoft\Templates

*If you are not taken to one of these folders, navigate there manually. Substitute UserName with your user name.*

3. Name the template **FermilabTemplate**
4. Click **Save** and **Close** the program

**Folder:** PowerPoint automatically chooses the correct folder for you when you choose to save as a Template file (.pot) or (.potx).

### Windows 7 / PowerPoint 2010



**Save as type:** PowerPoint Template.pot or PowerPoint Template (.potx)

**File name:** FermilabTemplate

## Opening the Fermilab Template File

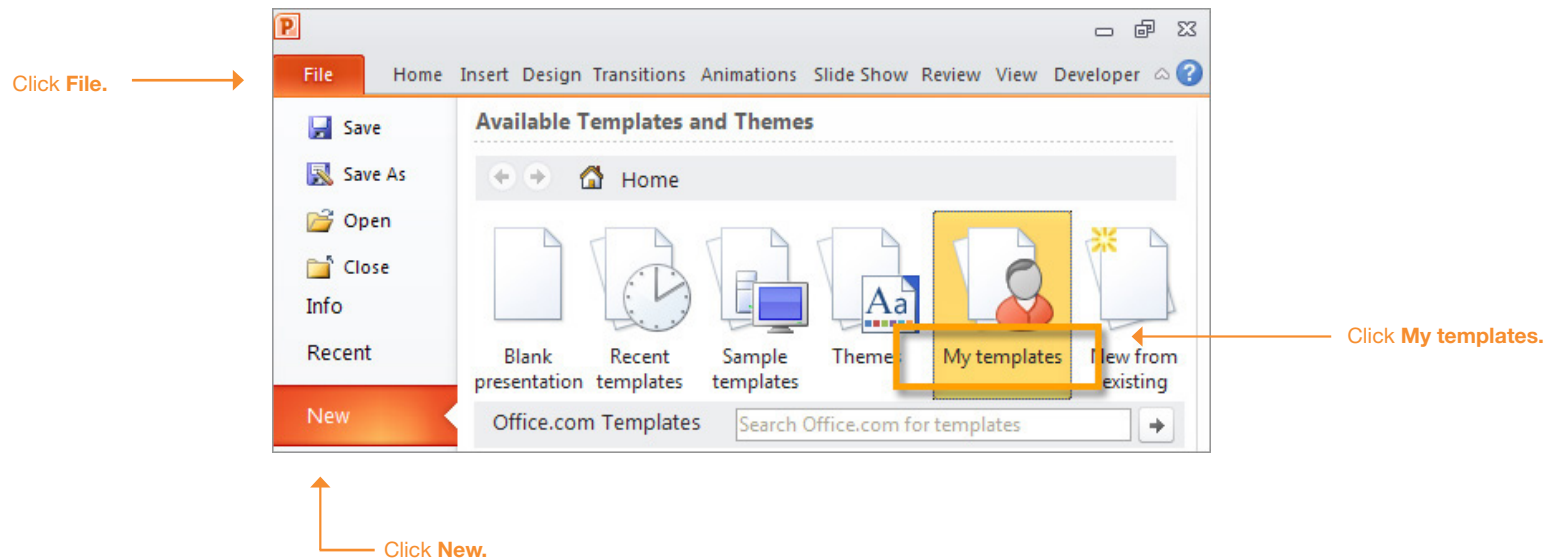
2

### Opening the Fermilab Template file

To open the template file that has just been installed, reopen PowerPoint. Opening the Fermilab template file will vary depending on the version of operating system and particular set up of the machine being worked on.

### PowerPoint 2010 Windows 7

In PowerPoint 2010 Windows 7, click on **File** and select **New** and select **My Templates**.



The template is designed in Standard (4:3) format.

### Helpful sites

<http://office.microsoft.com/en-us/powerpoint-help/apply-a-template-to-your-presentation-HA010338385.aspx?CTT=5&origin=HA010338384>

## Selecting Fermilab Slide Layouts

3

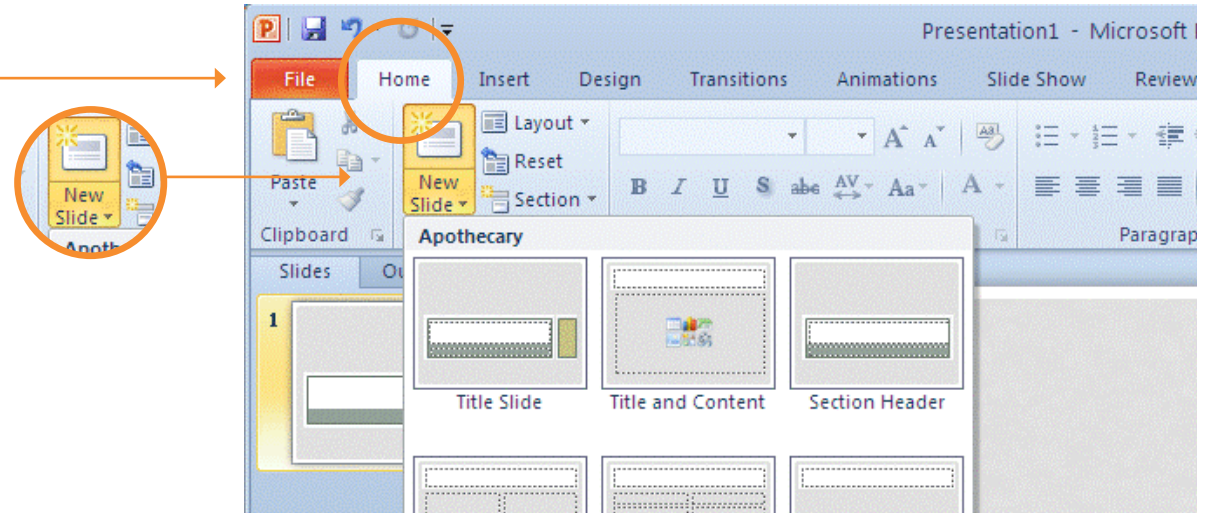
### Selecting the Fermilab Slide Layouts

To insert a new slide using Fermilab's slide layout design, locate the **New Slide** tab in your version of PowerPoint. Thumbnails showing a variety of slide layouts should appear.

The **Insert new slide** toggle and **Slide Layouts** tab will be in different locations depending on the version of operating system and particular set up of the machine being worked on.

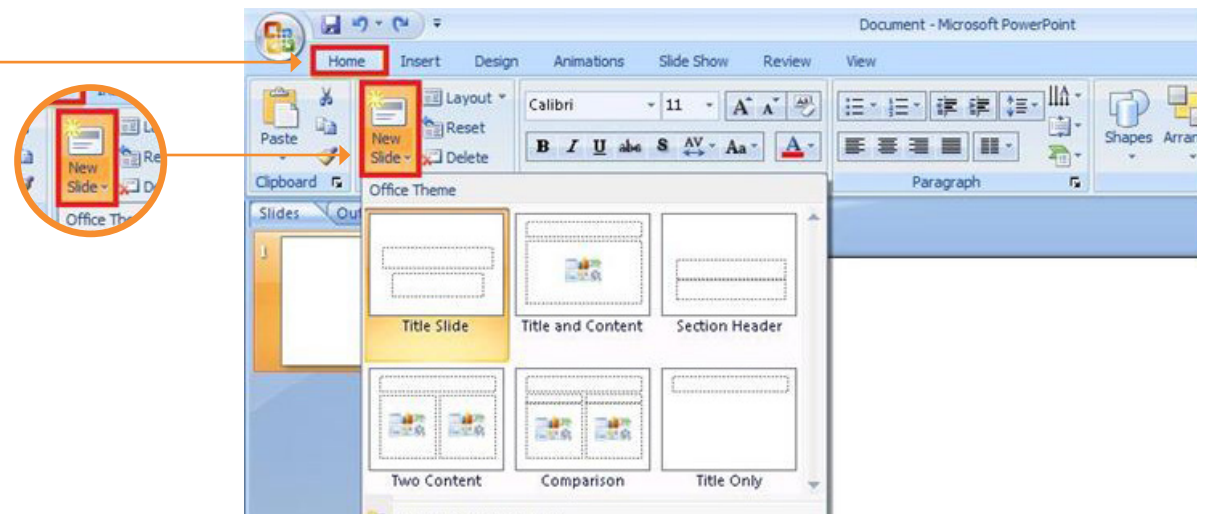
### Selecting Fermilab Slide Layouts in PowerPoint 2010 Windows 7

1. Click **Home**.
2. Click the small triangle to the right of "new slide" to insert new slides.



### Selecting Fermilab Slide Layouts in PowerPoint 2007 Windows XP

1. Click **Home**.
2. Click the small triangle to the right of "new slide" to insert new slides.



### Helpful site

<http://office.microsoft.com/en-us/powerpoint-help/add-a-new-slide-HA001230231.aspx?CTT=1>

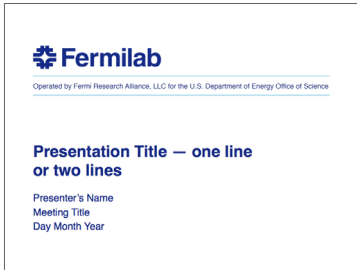
# Sample Slide Layouts

The following are sample slide layouts available for use when building your own PowerPoint presentation:

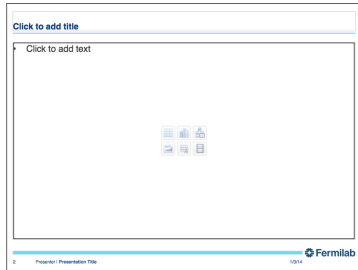
- Title slide**
- Title with Header Line and Footer**
- No title, Footer only (3 slide layouts)**
- Title without Line with Footer**

Note, PowerPoint may display the slide layouts in reverse order than what is shown in the example below.

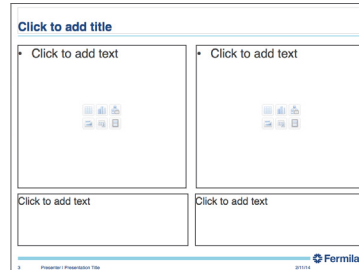
For design consistency, it is recommended that when creating your presentation you use the slide layouts containing **Title with Header Line and Footer**. When appropriate use (sparingly) the other slide layout options.



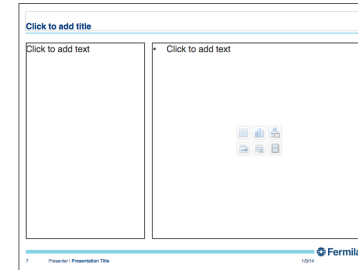
**Title Slide**



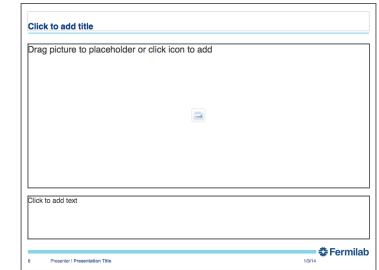
**Title & Content**



**Two Content & Caption**



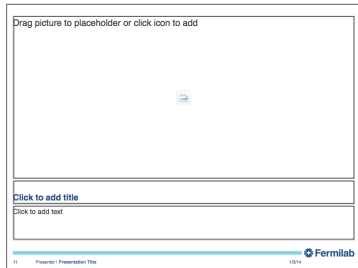
**Content & Caption**



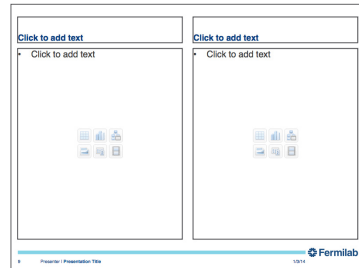
**Picture & Caption**



**Footer Only: Blank**



**Footer Only: Picture & Caption**



**Footer Only: Comparison**



**Footer Only: Title & Content**

## Header and Footer

5

The header and footer has been designed to maintain consistency in Fermilab's brand and identity.

The type size for the header title is 24pt. The type size for the footer information is 9pt in a regular weight. The "Presenter Name" and "Presentation Title" are separated by a vertical line element.

The recommended primary typeface is Helvetica and the alternate typeface is Arial.

### Header

**Click to add title**

24pt type size

The light blue line is part of the background slide design and cannot be modified. The title of the slide should always be placed above the line.

There is an alternate slide layout available named **Title without Line with Footer**. The title size should remain at 24pt type even without the title line element.

### Footer

2

Presenter | Presentation Title

1/30/14

Slide number

A vertical line element separates "Presenter" and "Presentation Title." A single space before and after the vertical line is recommended.

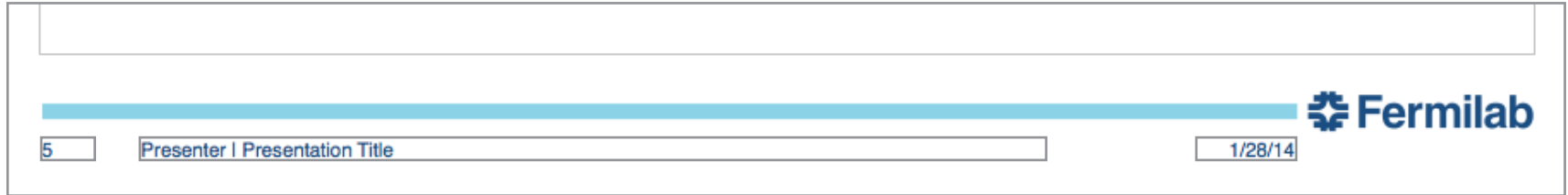
The light blue line with the Fermilab Logo is a footer design placed into the background and cannot be modified.

Date: fixed date or auto update (this can be selected in the **Header and Footer** settings on page 6).

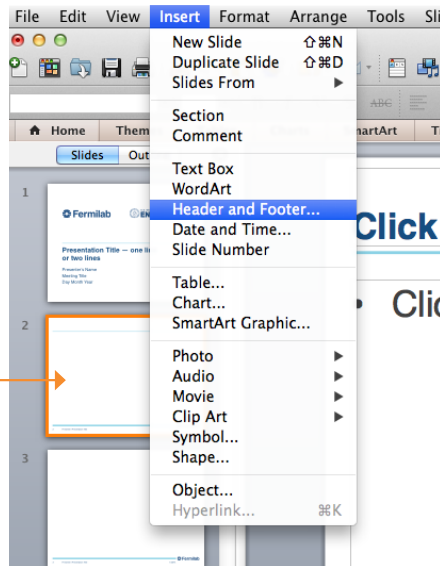
# Editing the Footer

The following are steps to edit the Footer text that appears at the bottom of each slide.

## Footer



**Step 1.** Click on any content slide, click **Insert** and **Header and Footer...**



Select any content slide to edit the footer, it will not work if the title slide is selected.

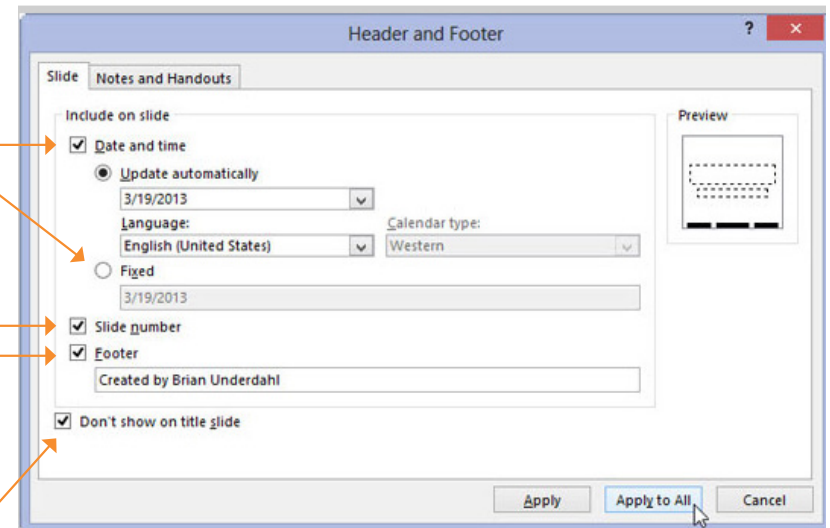
**Step 2.** The **Header and Footer** window will appear. Click on the fields to change the footer information.

**Date**  
2 options: update automatically or fixed.

**Slide number**

**Footer**  
Type your name in place of "Presenter" and type in your presentation title. A vertical line separates the name and title. Leave a space before and after the vertical line.

**Don't show on title slide**  
Check this box.



**Apply to all**  
(if desired)

Another way to open the **Header and Footer** window is to click **View** and then **Header and Footer...**

# Colors



A Fermilab color palette has been created and should be used when creating your PowerPoint presentation.

The Fermilab colors may appear in the first row under **Theme Colors** in your PowerPoint presentation. To see this, highlight the text to change color, click on the **Font Color** tab (**step 1**) and click **More Colors** (**step 2**). A new **Colors** window will open with the Fermilab palette (**step 3**).







If the Fermilab colors do not appear, click on the **RGB/CMYK** slider and enter the color formulas provided on the right.

## Theme Colors

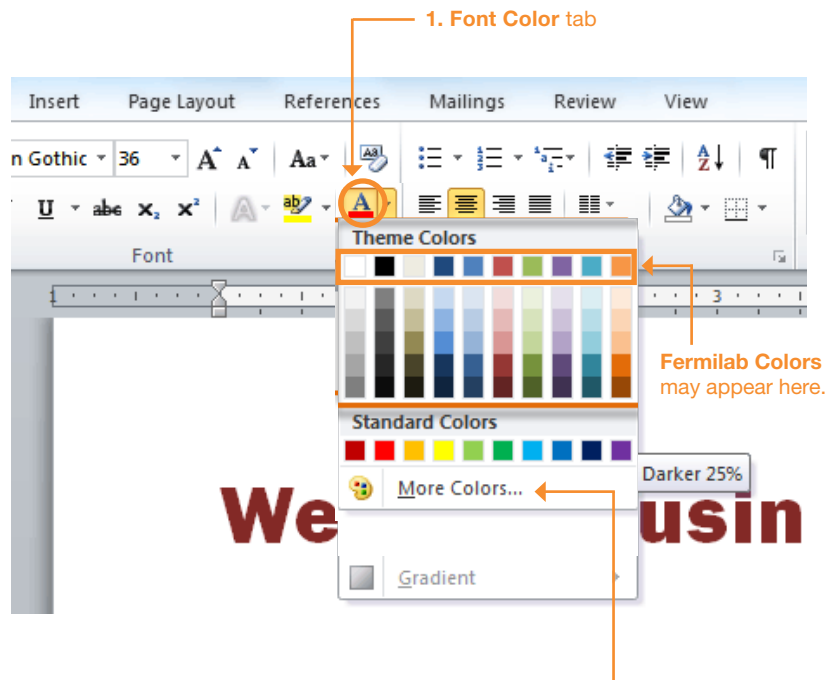
### Recommended for text

-  Blue (text and bold titles)  
RGB: 0,76,151 / CMYK: 100,53,2,16
-  Dark Gray (text)  
RGB: 99,102,106 / CMYK: 0,0,0,75

### Accent colors, use sparingly

-  RGB: 153,214,234  
CMYK: 34,0,5,0
-  RGB: 175,39,47  
CMYK: 5,96,80,22
-  RGB: 0,181,226  
CMYK: 75,0,5,,0
-  RGB: 76,140,43  
CMYK: 76,3,100,18
-  RGB: 246,141,46  
CMYK: 0,54,87,0
-  RGB: 167,168,170  
CMYK: 0,0,0,45

## PowerPoint 2011



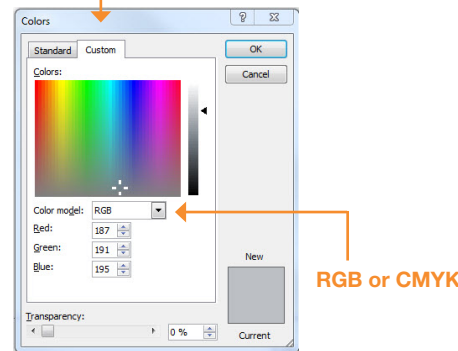
1. Font Color tab

Fermilab Colors may appear here.

2. Click **More Colors** if Fermilab's Colors do not appear in the first row under **Theme Colors**.

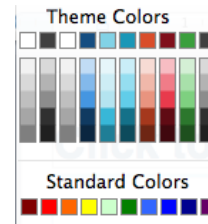
3. Colors window

Clicking on this tab will reveal the **RGB** or **CMYK** sliders.



RGB or CMYK

The Fermilab colors may appear in the first row under **Theme Colors**, if this is not the case, use the **RGB/CMYK** slider window to enter the RGB or CMYK values for the Fermilab colors.



Fermilab Colors may appear here under **Theme Colors** and should be the same color swatches as what's shown above.

A color theme file (Fermilab.xml) is available to copy onto your harddrive.

### Windows 7 save **Fermilab.xml** file in:

%USERPROFILE%\AppData\Roaming\Microsoft\Templates\Document Themes\Theme Colors

### Windows XP save **Fermilab.xml** file in:

C:\Documents and Settings\UserName\Application Data\Microsoft\Templates

Note, the folder location may differ depending on the version of windows and particular set up of the machine being worked on.

If you can not access **My Themes** folder on your computer, the other option is to enter the color formulas.

## Fonts

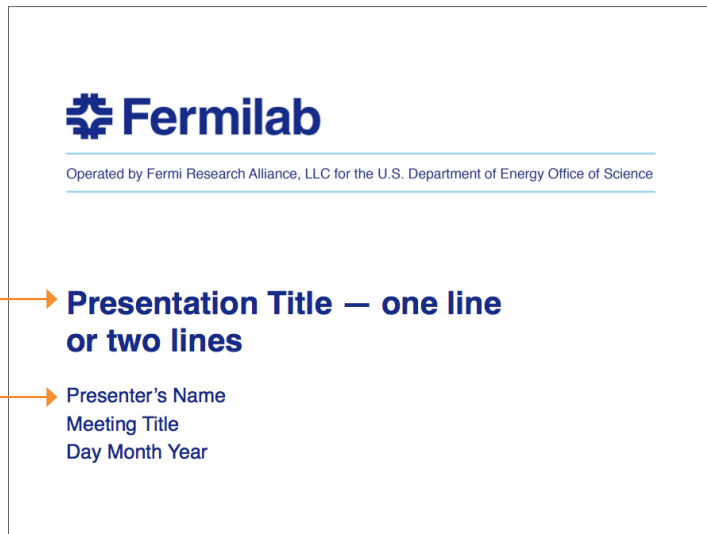
8

This section provides the recommended font sizes and weights to be used in your PowerPoint presentation.

Helvetica is Fermilab's sans serif typeface. This PowerPoint template has been created with Helvetica. If Helvetica is not an option, Arial is the replacement font.

### Font Sizes

#### Title slide



Helvetica 32 pt  
(alternate: Arial Bold)

**Presentation Title — one line  
or two lines**

Helvetica 20 pt  
(alternate: Arial)

Presenter's Name  
Meeting Title  
Day Month Year

#### All other content slides

Helvetica 24 pt  
(Bold)

**Click to edit Master title style**

Helvetica 24 pt

• Click to edit Master text styles

Helvetica 22 pt

– Second level

Helvetica 20 pt

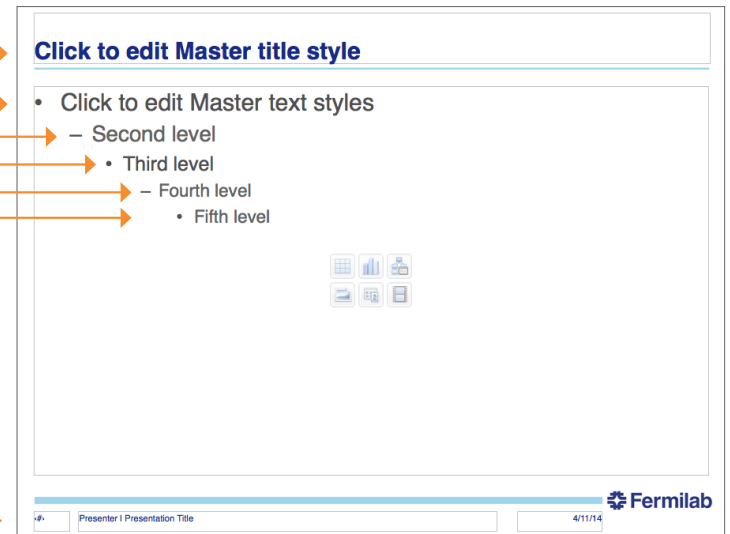
• Third level

Helvetica 18 pt

– Fourth level

• Fifth level

Helvetica 9 pt  
(Regular weight)



Fermilab

Presenter | Presentation Title

4/11/14